



Test Tube Transport System

Item 18815: Test n' Toss Transport Cartons for 4 Racks

For use with Test n' Toss Transport Units (sold separately)

INSTRUCTIONS FOR USE

Thank you for buying the Test n' Toss™ Test Tube Transport System, the innovative system for storing and transporting test tubes. The Transport System is designed to meet U.S. Department of Transportation (USDOT) regulations governing ground transport of Category B Infectious Substances (see Code of Federal Regulations 49 CFR 173.199 for details.)

This case contains ten Transport Cartons, enough to carry 40 Test n' Toss Transport Units (covered and sealed racks), each rack holding up to 80 test tubes, up to 16mm x 100 mm in size. Test n' Toss Transport Racks are sold separately.

Phase I. Assembly of Transport Carton

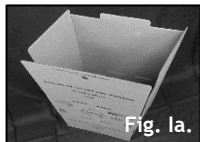


Fig. 1a.

1. Remove single Transport Carton from carton.
2. Form Transport Carton into an open rectangle. (See Fig. 1a.)

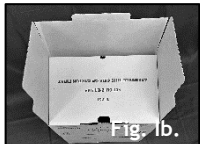


Fig. 1b.

3. Fold together bottom flaps as follows:

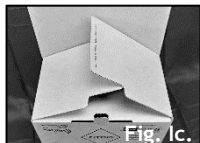


Fig. 1c.

4. Start with the flap marked "BOTTOM INNER FLAP." Fold down, tucking end into carton. (See Fig 1b.)

5. Fold down the side flaps marked "2" and "3". (See Fig. 1c.)



Fig. 1d.

Fold down the bottom flap marked "4" (See Fig. 1d.)

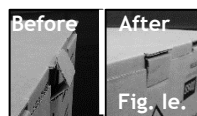


Fig. 1e.

6. Tuck locking tab in, to lock closed. (See Fig. 1d.)

7. Turn carton over. (See Fig 1f.)



Fig. 1f.

8. Carton is ready to receive Test n' Toss Transport Racks.

Phase II. Packing and Preparation for Transport



Fig. 1Ia.

1. Fill Test n' Toss Transport Racks as desired, sealed in zip-closure bags per instructions for Transport Racks (available separately. See Fig. 1Ia)

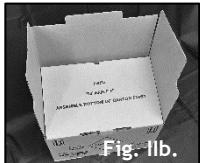


Fig. 1Ib.

2. Place up to 4 sealed Transport Racks in Transport Carton.
3. Fold together top flaps in similar fashion to bottom flaps (described above) as follows:

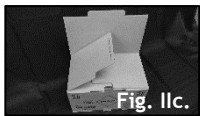


Fig. 1Ic.

4. Start with the flap marked "TOP INNER FLAP." Fold down, tucking end into carton. (See Fig 1Ib.)

5. Fold down the side flaps marked "2" and "3". (See Fig. 1Ic.)



Fig. 1Id.

6. Fold down the bottom flap marked "4", and tuck locking tab in, to lock closed. (See Fig. 1Id. & Fig 1Ie, ready for transport.)



Fig. 1Ie.

7. If fewer than 4 Transport Racks will be carried in the Transport Carton, use Test n' Toss Transport Spacers (Item #18816, available separately) to take up the extra space.

CAUTIONS:

Test n' Toss Transport Racks are NOT puncture resistant and should NOT be used for discarding of contaminated sharps. These racks are NOT high-temperature resistant and are NOT designed for use in an autoclave. Do not use above 140° F (60° C.)

Reorder Number: 18815

Transport Cartons for 4 Racks, Case of 10 cartons
For use with Test n' Toss Transport Racks (sold separately)



Whitney Medical Solutions
Real Solutions for Real Problems™
Made in U.S.A
PHONE: 1-800 DEVICES
www.whitneymedicalsolutions.com